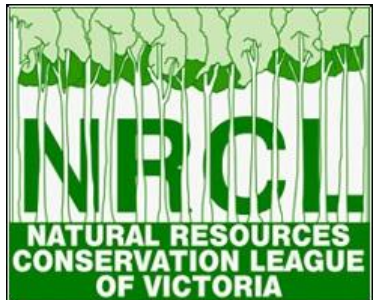


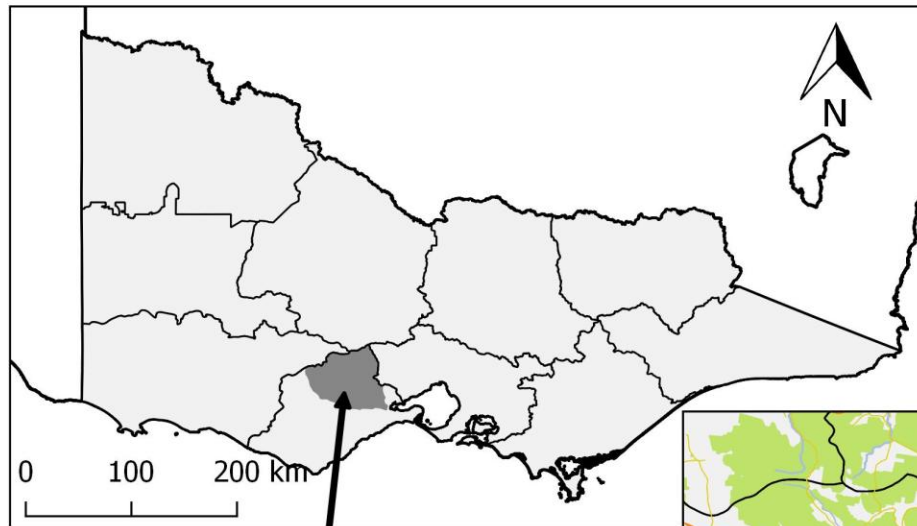
Bunanyung Landscape Alliance: A Community Response at Landscape Scale

Peter Gell



LANDSCAPE ALLIANCE

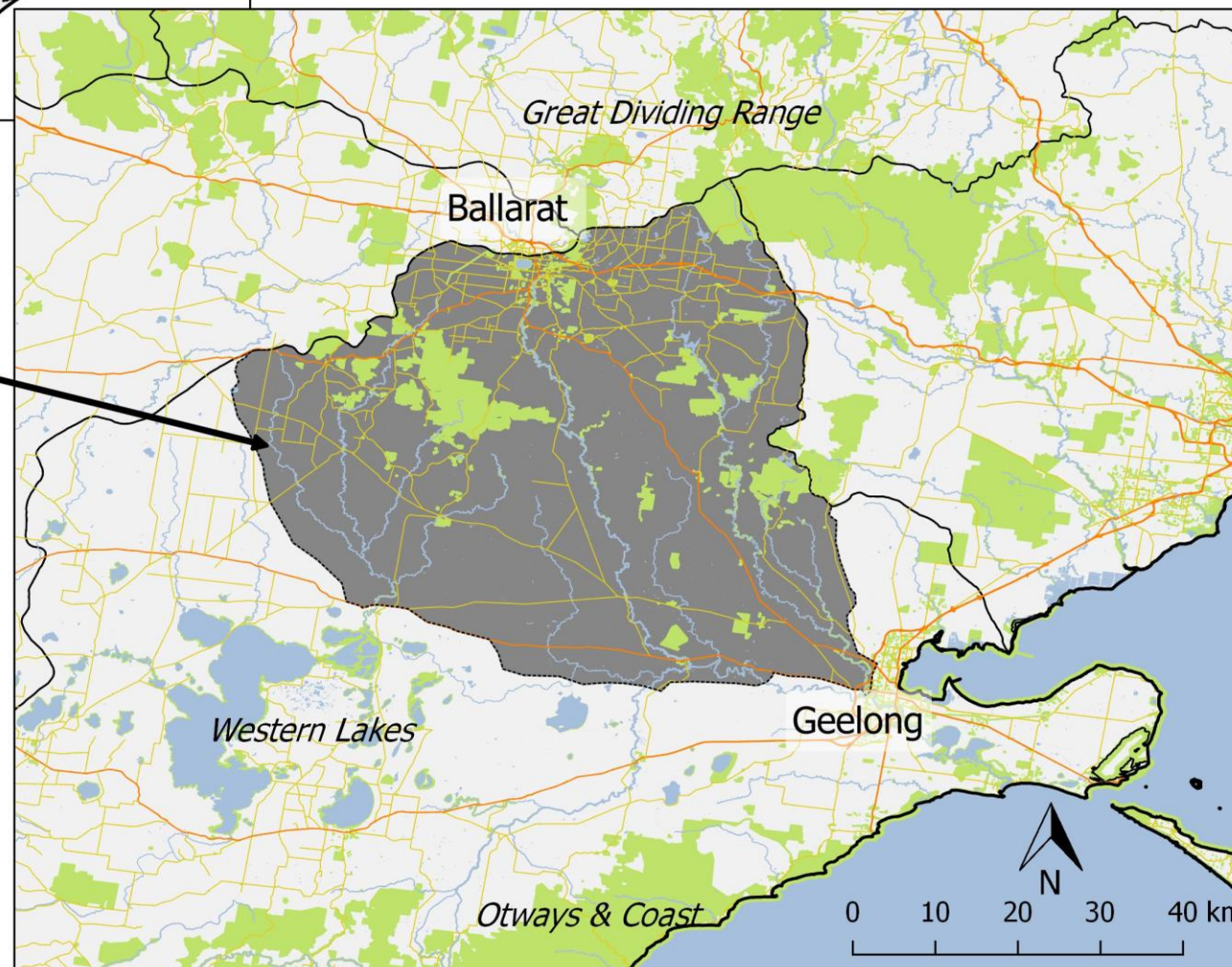




Bunanyung Landscape Alliance
Focal Landscape

Focus on Barwon sub-catchments

Bunanyung is the Wadawurrung spelling for Mt Buninyong and is described as a “man lying on his back with knees raised (from shape of the hill)”.





Where?

- Moorabool
- Leigh
- Woody
- ...Landcare Networks





- ***Vision Statement***

Bunanyung Landscape Alliance - healthy landscapes & resilient communities.

- ***Mission Statement***

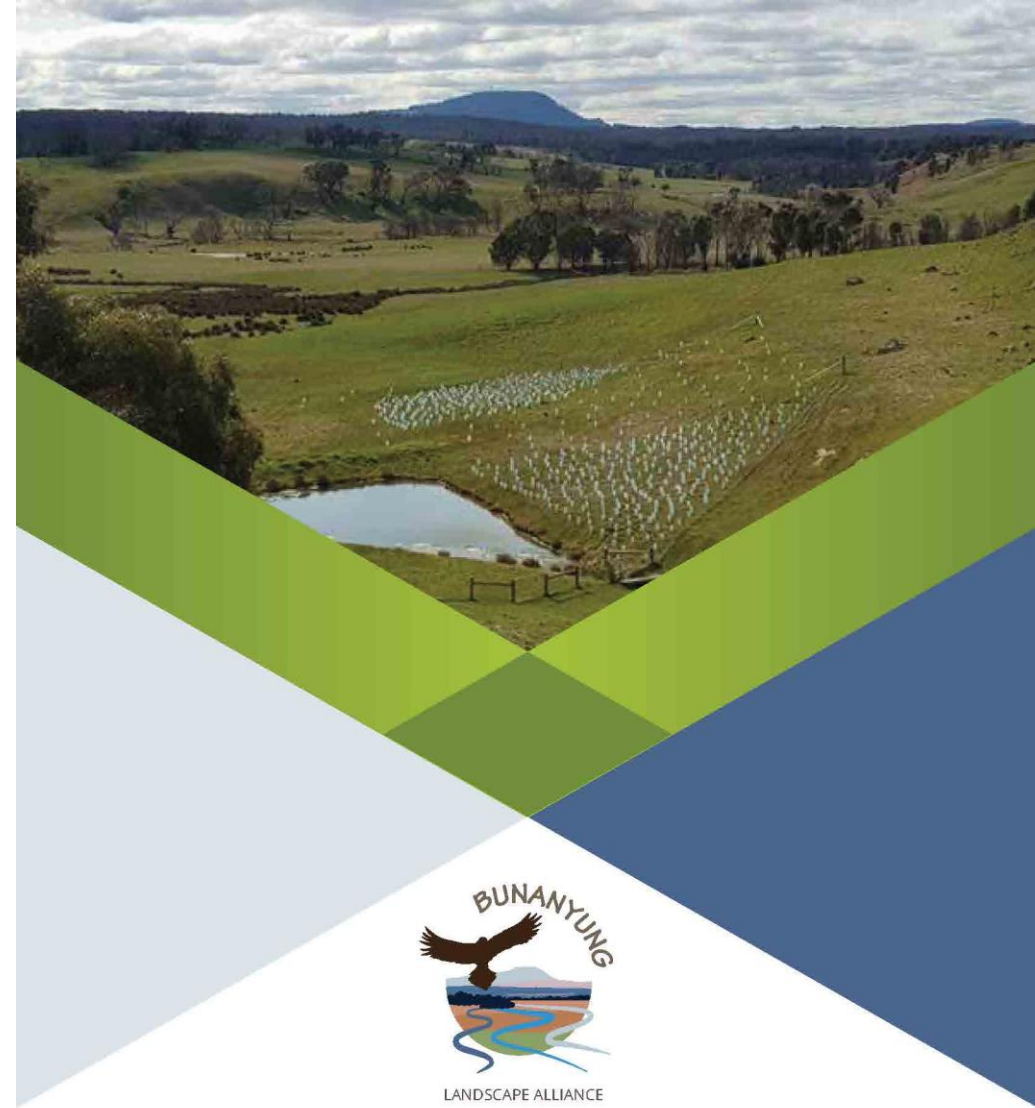
Bunanyung Landscape Alliance is the community advocate for our environment. In partnership with our stakeholders, we assist in the development and implementation of shared, evidence based, visionary landscape - scale projects that protect and/or enhance our land & waterscapes. These projects will reflect the aspirations of our local member groups and our goal of engaging the broader community.



Establishment of the Alliance

Input from friends and colleagues who have provided guidance/permission to use existing documents to help guide the Alliance's EDSP strategy and to expedite the planning process including:

- the Interim Committee,
- Wathaurong Aboriginal Cooperative,
- Natural Resources Conservation League,
 - GondwanaLink,
 - Greater Eastern Ranges Initiative,
 - Biolinks Alliance,
- Corangamite CMA - Connected Landscapes and the Clarksdale Group.



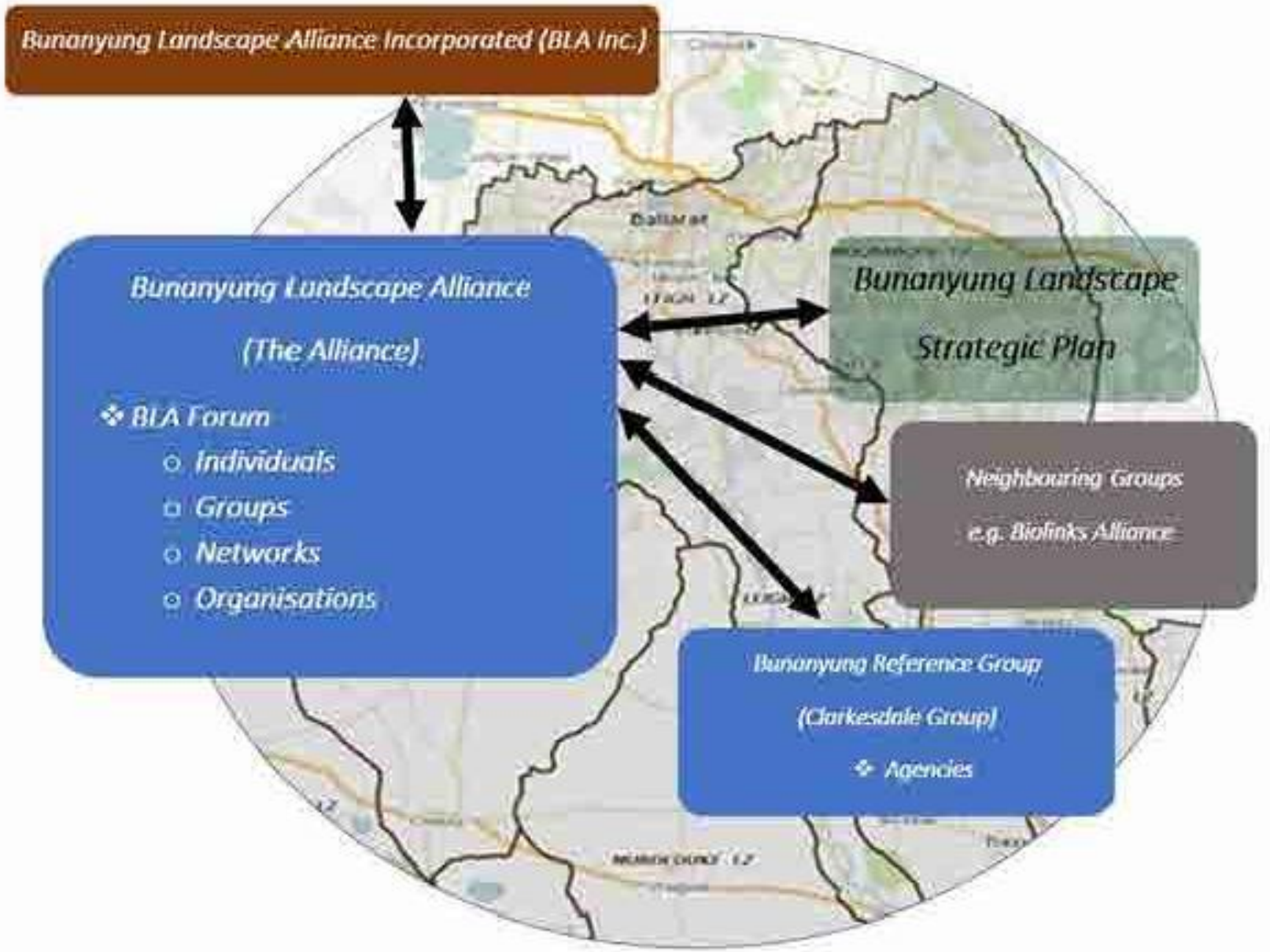
Bunanyung
Landscape Alliance

draft Establishment Document & Strategic Plan



Priority Roles from Members Questionnaire

1. Develop **landscape scale policies and projects in rural and urban areas** that are based on sound science, promote community engagement and adequate resourcing to ensure quality outcomes are achieved.
2. Provide a **collective voice on behalf of the community to advocate** for the environment.
3. Actively **pursue resources and funding** from government agencies, water authorities, research institutions and philanthropic trusts and foundations.
4. **Support local groups** through the provision of assistance with funding applications to release them for local project activities.
5. **Promote collaboration with government and agencies** such as catchment management authorities and water boards.





We've been talking with:

- **NRCL** - a key partner and mentor in our alliance development
- **Corangamite CMA** Connected Landscapes project - a biodiversity project focussed on the Central Highlands Water catchments around Ballarat
- Central Highlands **Biolinks Alliance** - regarding their alliance and where we might fit within that system
- **Federation University** - our potential research partner for future projects
- **CeRDI** - regarding the NRM portal and potential website services
- **DELWP** – through the Biodiversity Response Planning process and the Regional Climate Adaptation Group project
- **Central Highlands Water** – via Yarrowee River plan and Gordon STP plan



Points of Difference

- Independent, **community-based** approach to landscape and waterway restoration
- Identifies and Prioritises activities based on:
 - a **landscape-scale** perspective
 - Understanding of **distribution** of ecological assets
 - Understanding of the habitat (and other) **needs** of ecological assets
- Seeks to **monitor** (& research) locations to evaluate the ecological return on investment; and improve practice;
- Focuses on landscape scale (incl. **public**) benefit from work on **private** (and/or public) lands

Projects



- Little Creeks – funded through the DELWP regional Climate Adaptation Group’s yearly delivery plan.
- Bunanyung Biolink – large scale biolink plan to reconnect Wombat and Enfield Forests (Lal Lal to Bostock section part of BRP proposal)
- Central Highlands Nurseries – assessment of regional capacity for provision of indigenous plants at scale
- Peri-urban biodiversity – initiative to empower peri-urban blockies to improve habitat provision

Principles of Restoration Ecology (SER)

- “Ecological restoration, when implemented effectively and sustainably, contributes to protecting biodiversity;supporting climate change mitigation, resilience, and adaptation...(Gann et al., 2019: 1)



Riparian Restoration

- Riparian ecosystems provide a suite of ecological functions that are lost when they are degraded or removed. These include:
 - light and temperature control through shading (Davies 2010, Restoration Ecology),
 - Nutrient filtration and cycling
 - Sediment trapping and cycling that regulates water quality
 - Bank and bed stabilisation
 - Biodiversity conservation through trophic subsidies and the provision of aquatic and terrestrial habitat

Keeping Little Creeks Cool

- “Resilience of freshwater systems to thermal shifts is reduced through the loss of the shading effects of riparian vegetation.
- Many stream species in southern Australia are intolerant of elevated water temperatures, meaning that the maintenance of cool water refuges is critical to their sustainability, and consequently ecosystem health
- *In situ restoration of rivers and streams* is a practical response to climate change and restoration efforts are prioritising riparian revegetation particularly in areas of current or predicted climate change”.

Sailors Gully Creek

- Indigenous Planting
- Ponding
- Public Amenity

a



b



c



d



e



f



Pennyweight Gully

- Channelised
- Little riparian planting
- Little water retention provision

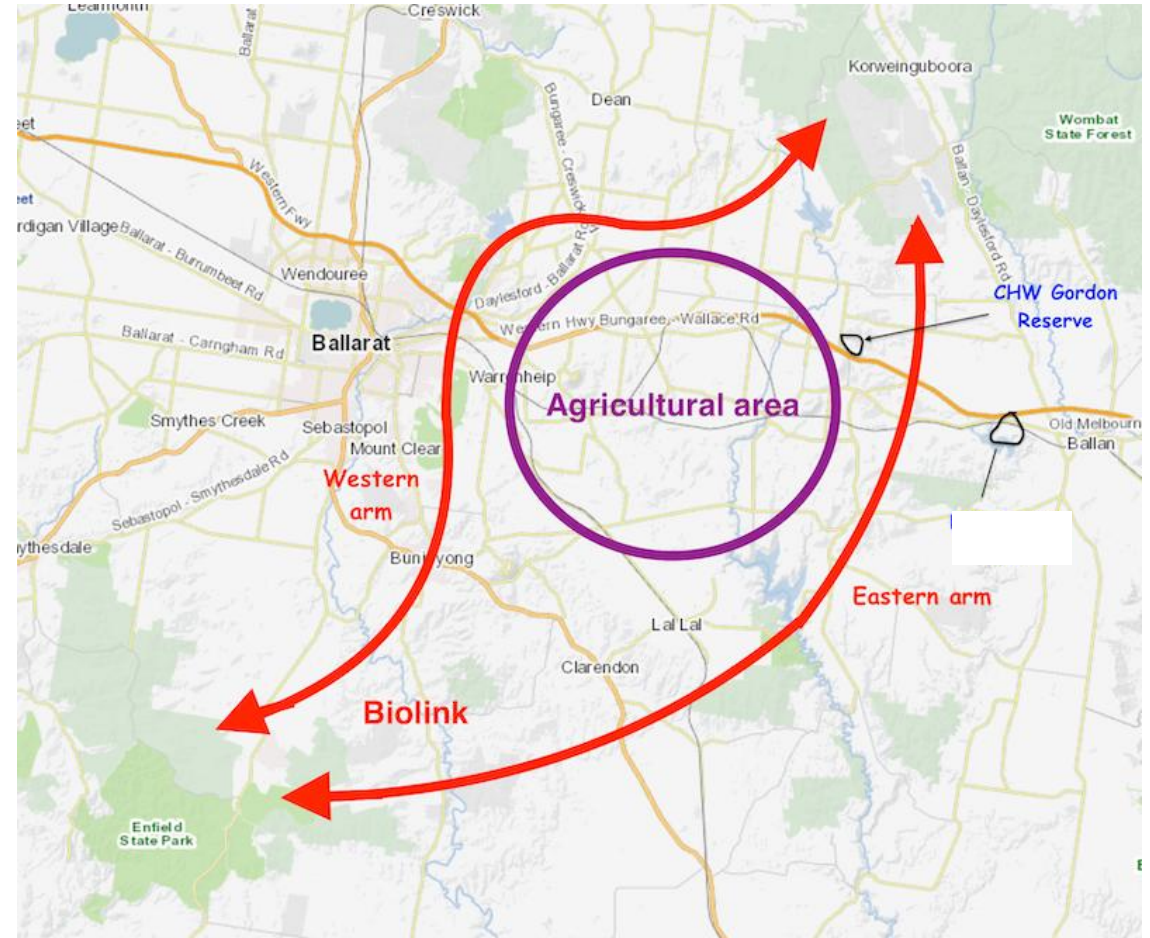
=

Early erosion, gullying,
elevated temperature,
poor WQ



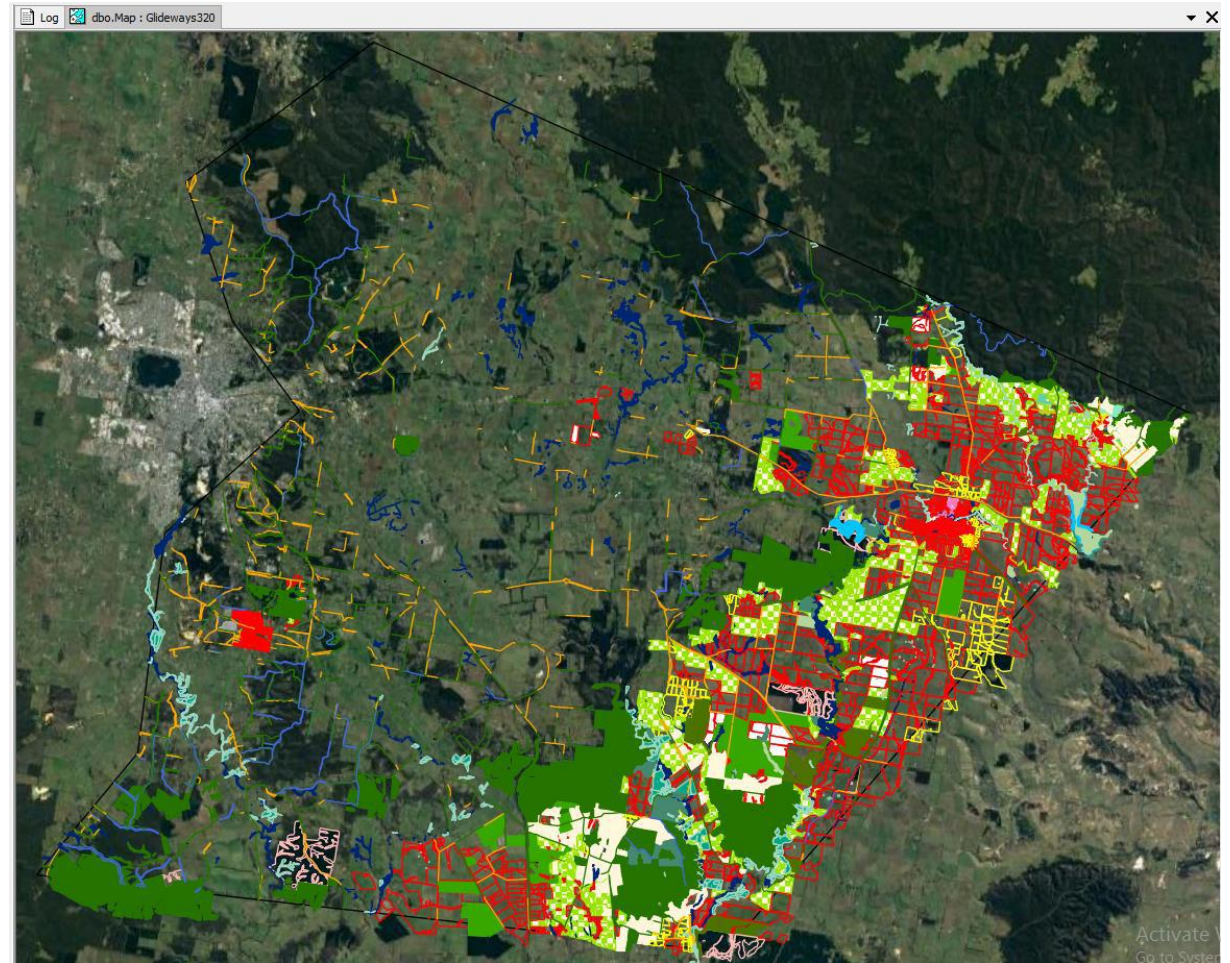
Bunanyung Biolink

- Large Scale ‘visionary’ biolink
- Focus on Riparian zones to mitigate landscape instability, cool waterways, food and habitat provision,
- Provision of replicate habitat stands as (eg fire) refugia
- Connectivity to accommodate progeny; (cc) movement



Mapping to Prioritise Restoration

- Based on remnants and paddock tree stands
- Overlays Floristic Units (cf EVCs) allowing paddock-scale restoration
- Incl. modelling of effective soil moisture under CC scenarios (D'Ombra)





Contact Us:



- www.bunanyunglandscapealliance.org
- bunanyunglandscapealliance@gmail.com
- Peter Gell (0427 870 280; p.gell@federation.edu.au)
- Andrea Mason (0427 338 482; andrea.mason@findingnorth.net.au)